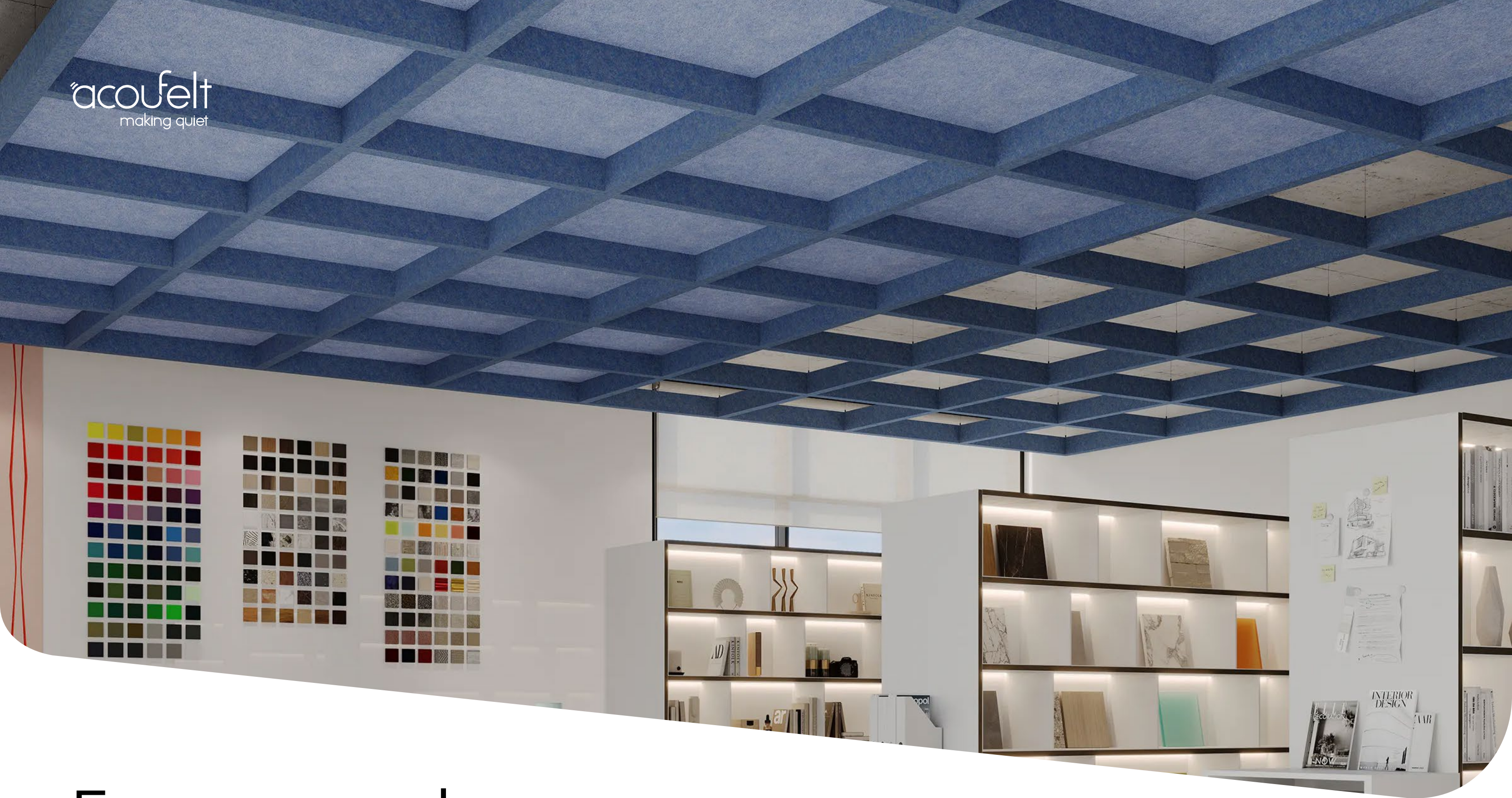


acoufelt
making quiet








Framework Ceiling Frames

Specifications

Application	Ceiling
Composition	100% polyester
Material	FilaSorb™
Recycled content	60% min. rPET
Weight	2400gsm
Beam thickness	50 or 75mm +/- 10%
Height options	150, 200, 250 or 300mm
Grid dimensions	600 x 600mm 900 x 900mm 1200 x 1200mm Custom size available upon request

Sustainability

 Made from 60% min. recycled content	 Declare Red List Free (3 rd Party Verified)
 Generated using 40% solar energy	 Recyclable at end of lifespan
 Total VOC's less than 0.5 mg/m ³ (3 rd Party Verified)	



Technical Data

Fire test method	EN 13501-1: 2019
Classification	B-s1, d0
Water vapour sorption method	ASTM C1104-2019 (Procedure A Modified)
Water sorbed by weight	0.20% (results based on a 12mm thick panel)
Total VOC test method	SCS-EC10.3-2014 v4.0 meeting standard CDPH/EHLB Standard Method v.1.2-2017
Total VOC result	≤ 0.5mg/m ³
Colourfastness test method	ISO 105-B02
Rating	6-7

Details

Lead time	6-8 weeks
Origin	United Kingdom
Warranty against defects	20 years*
Colourfastness warranty	20 years*

*Conditions apply

Acoustic Performance

Test method

ASTM C423-17: Standard test method for sound absorption and sound absorption coefficients by the reverberation room method

Installation method

J-600. Sample tested 5 baffles each hanging 600mm from the floor and 152mm from each other

Rating method

AS ISO 11654 -2002: Acoustics - rating of sound absorption - material and systems

Test results

NRC 1.65 | <1.0 (MH) aw, Class A

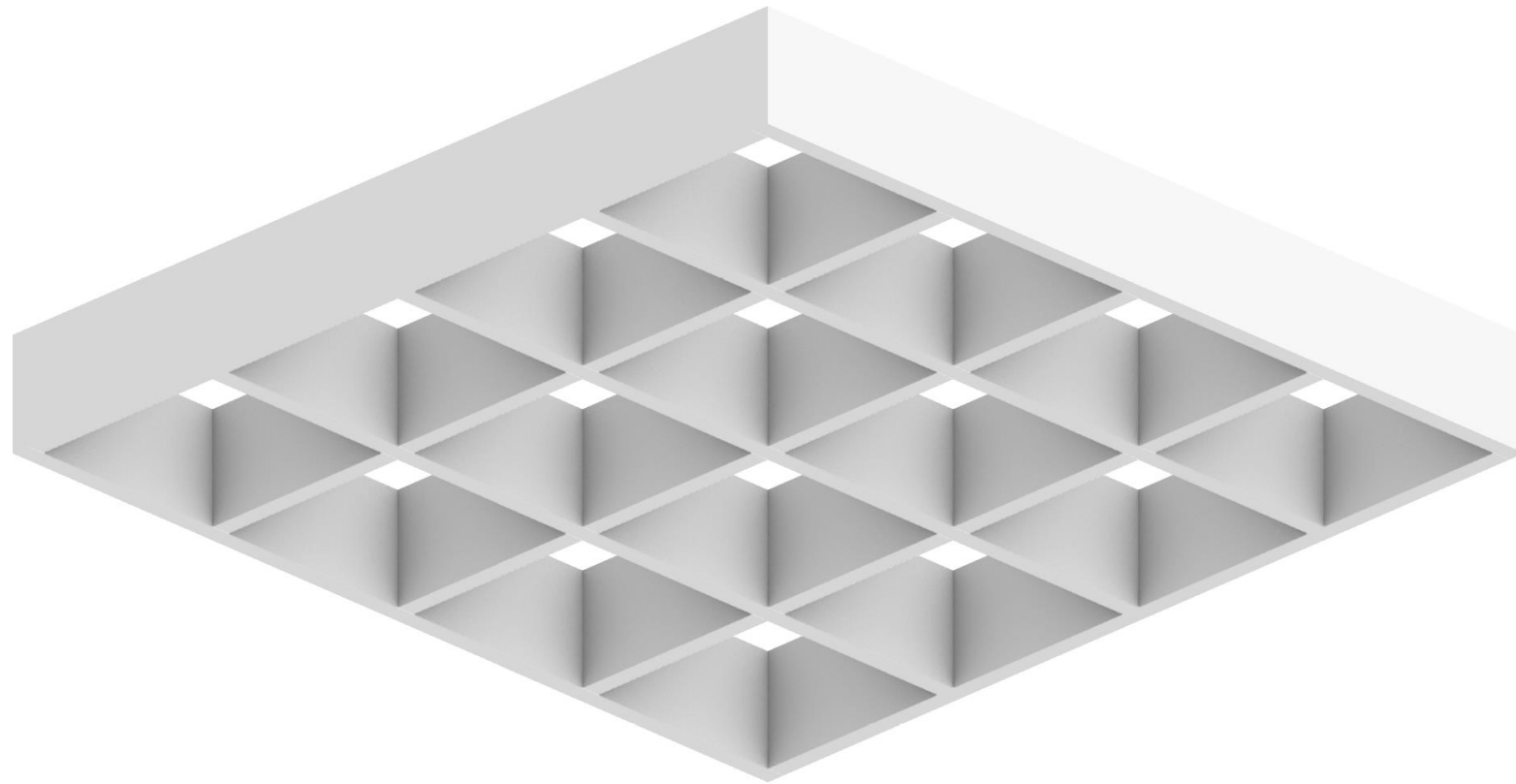


Frequency (Hz)	125	250	500	1000	2000	4000	NRC	Class Rating
α _w	0.26	0.86	1.25	2.02	2.49	2.49	1.65	Class A

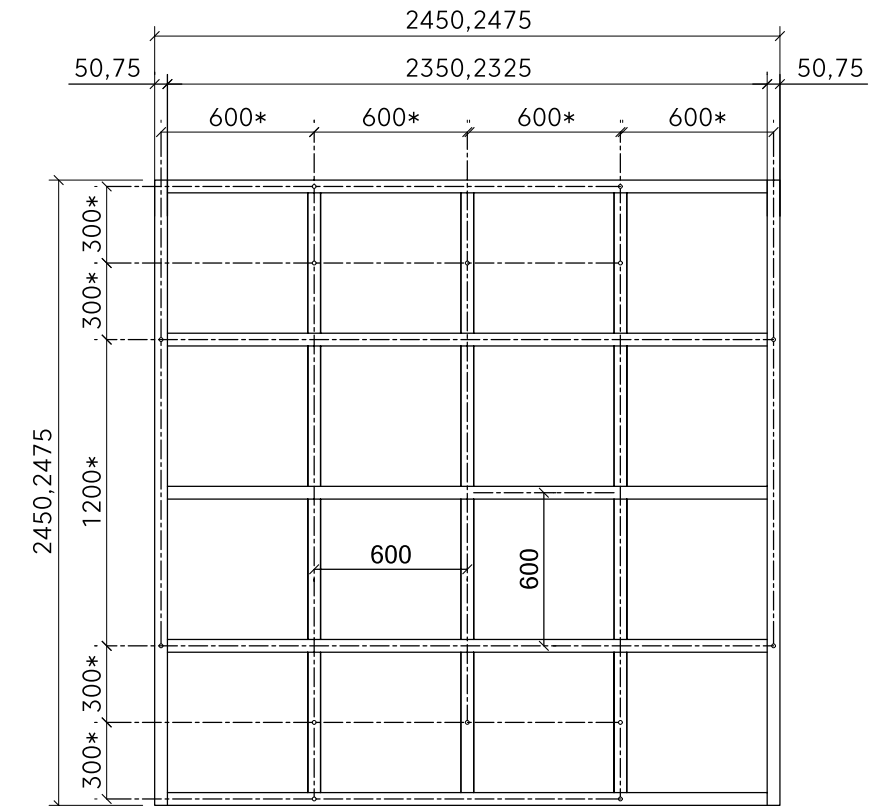
Performance Indices: **Noise Reduction Coefficient (NRC)** results represent the absorption coefficients measured at the one third octaves bands at 125, 250, 500, 1000, 2000 and 4000 Hz rounded to the nearest 0.05. Acoustic testing has been performed according to the methods mentioned above. Customisation of installation of the product could alter the results.

Open Design 1 (600 x 600mm)

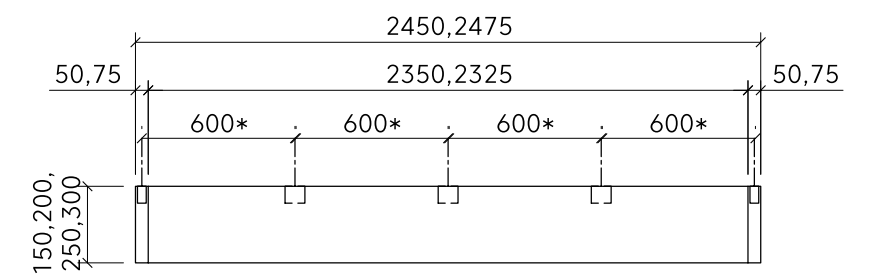
Perspective



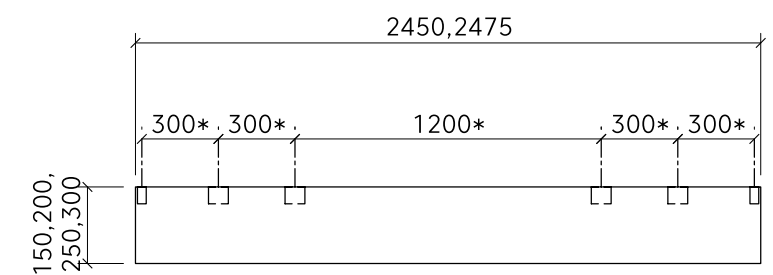
Plan



Front Elevation



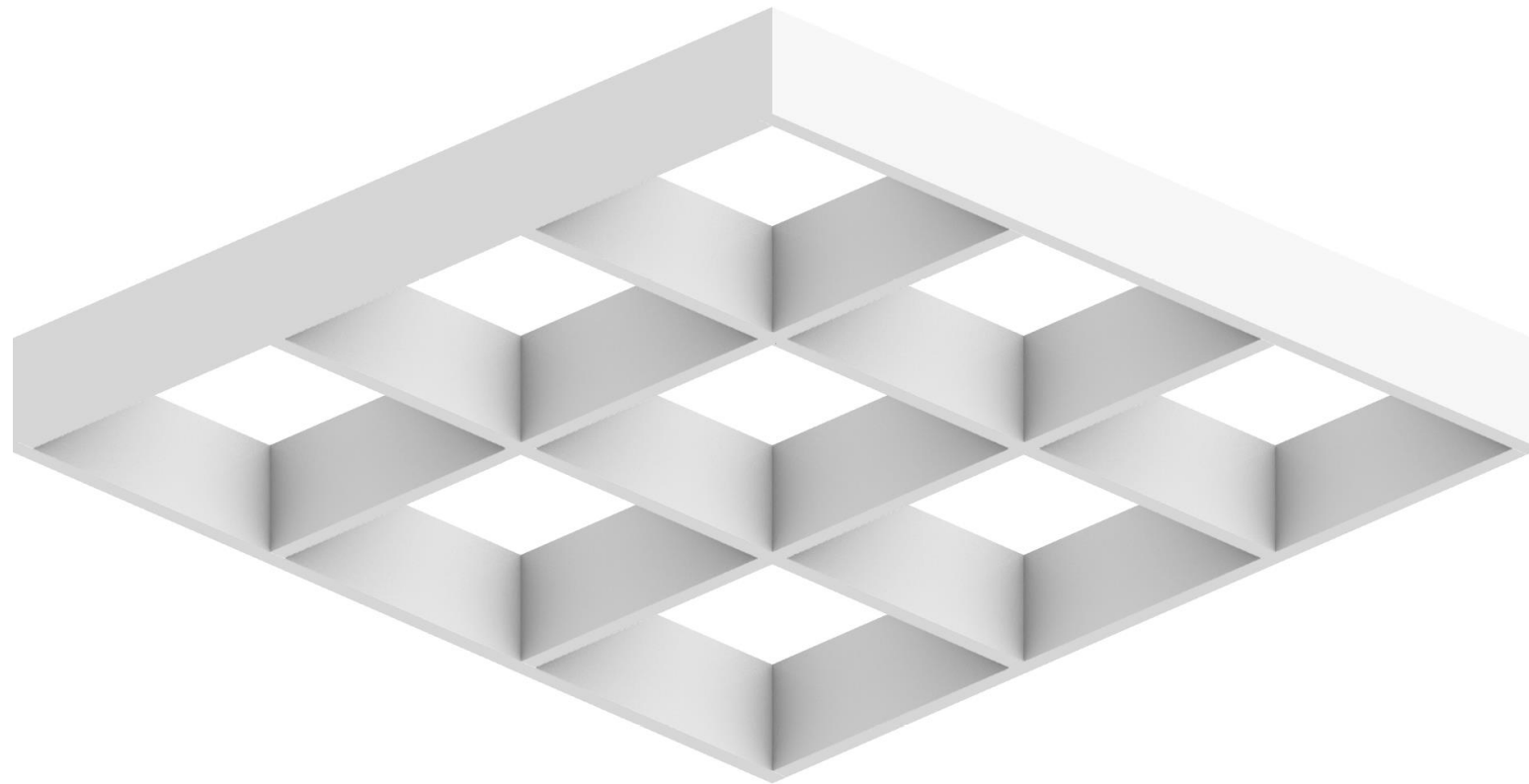
Side Elevation



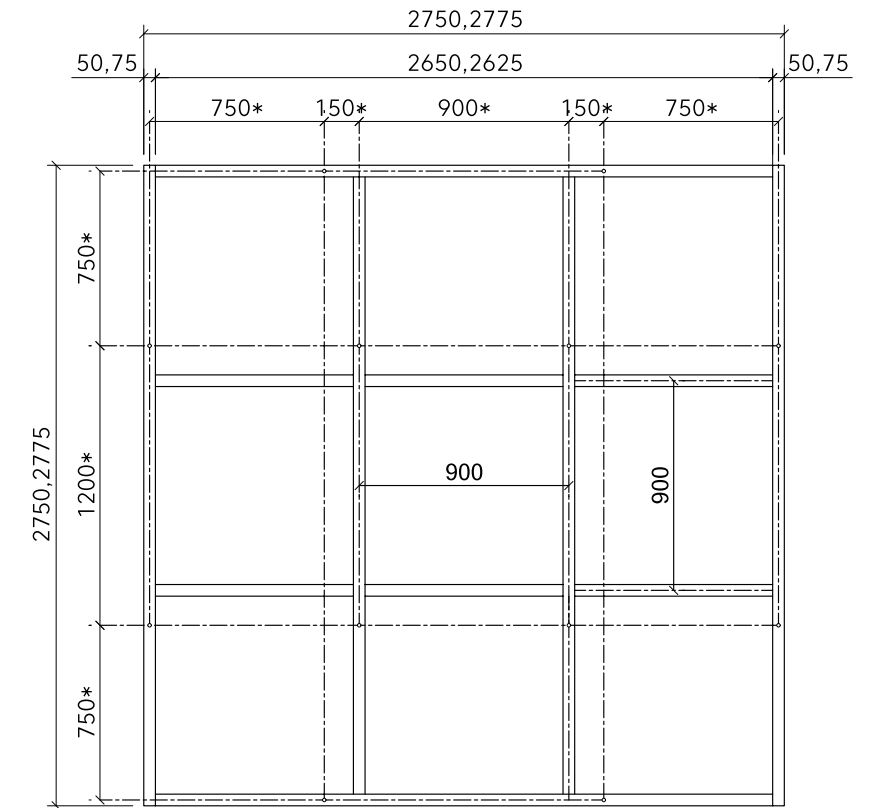
Notes
 ‘;’ Indicates sizing option
 * On center attachment spacing

Open Design 2 (900 x 900mm)

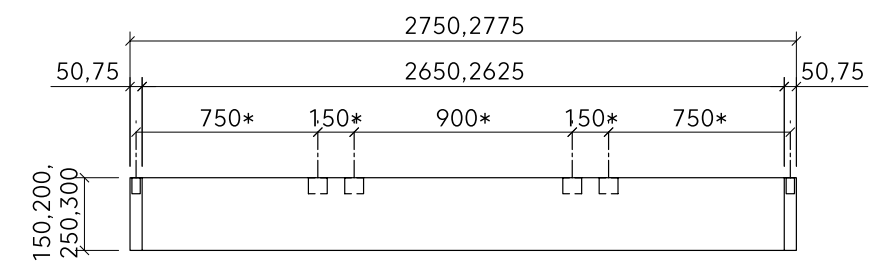
Perspective



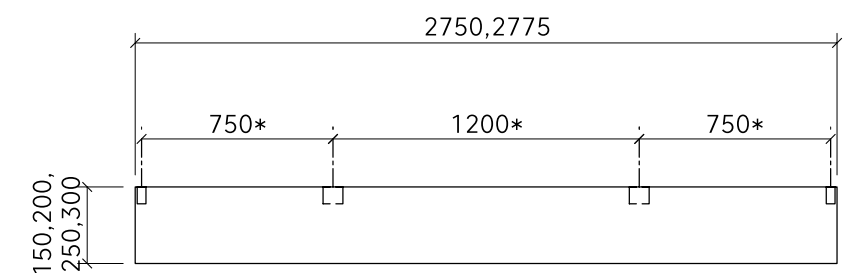
Plan



Front Elevation



Side Elevation



Notes

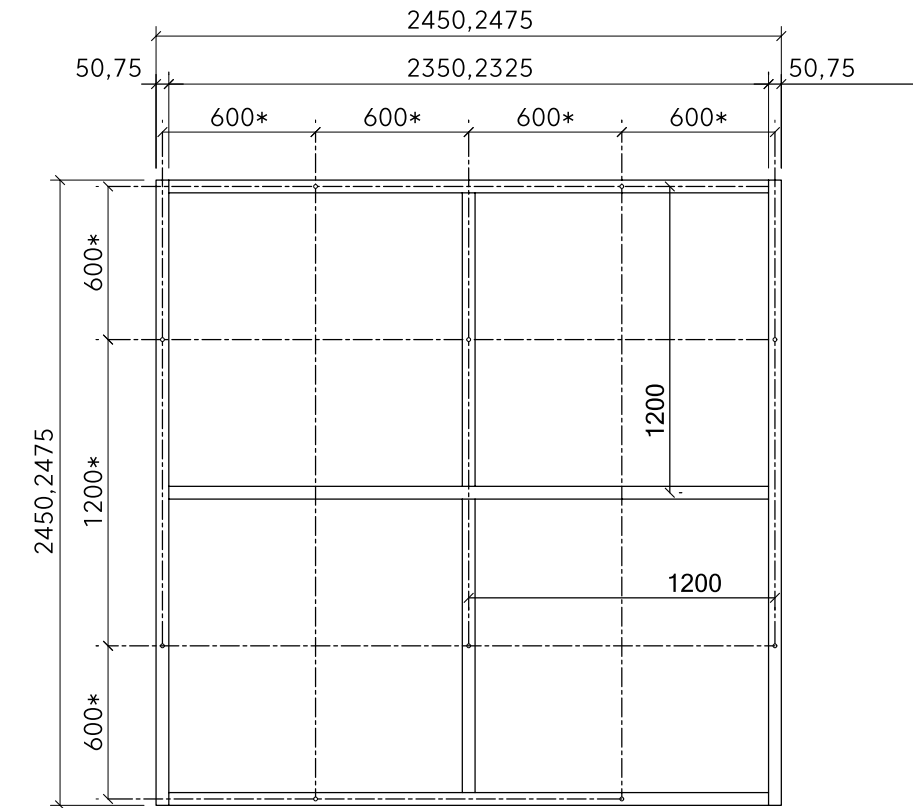
- ‘;’ Indicates sizing option
- * On center attachment spacing

Open Design 3 (1200 x 1200mm)

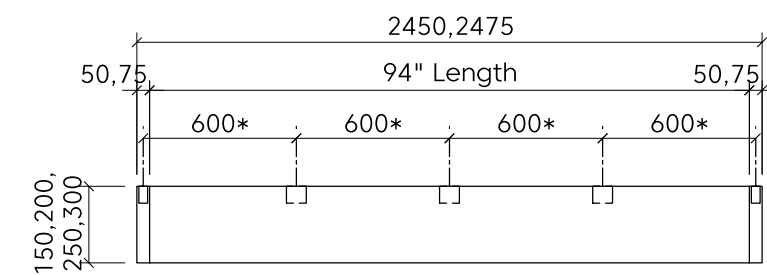
Perspective



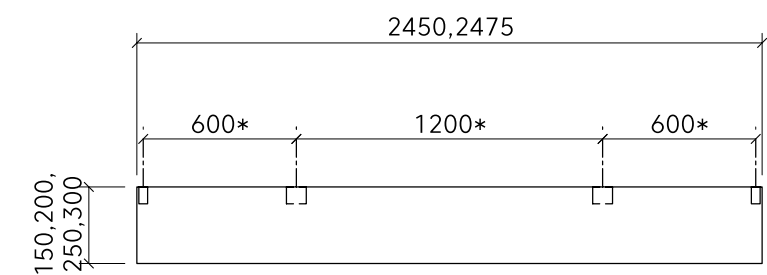
Plan



Front Elevation



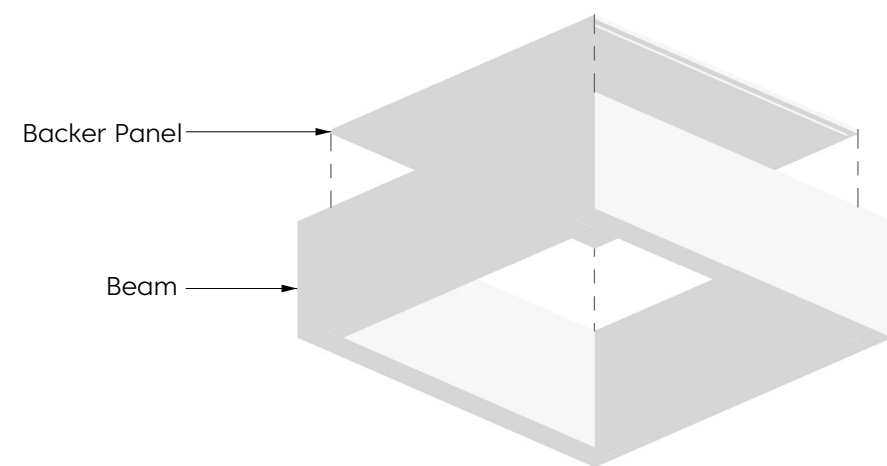
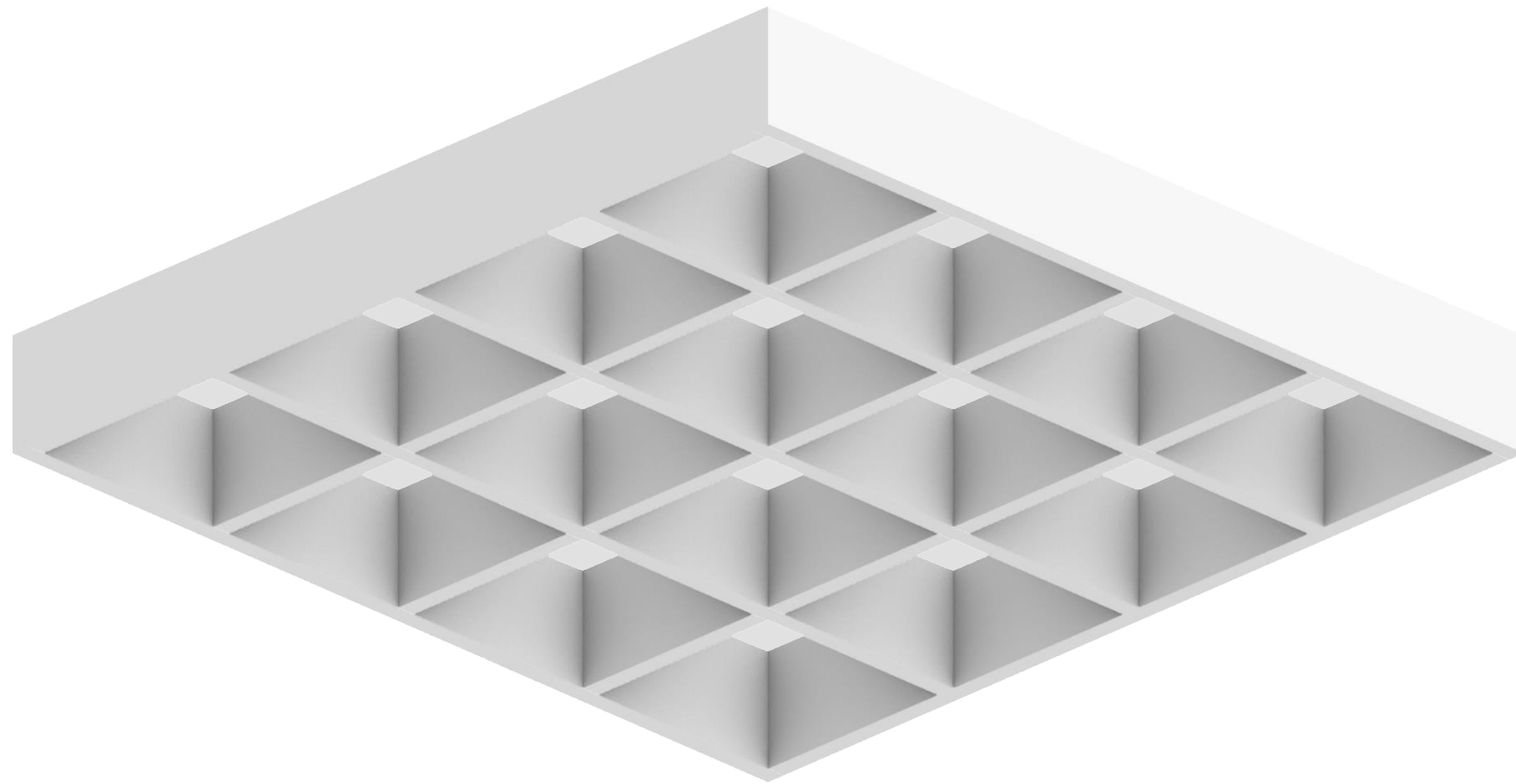
Side Elevation



- Notes**
- ';' Indicates sizing option
 - * On center attachment spacing

Capped Design 1 (600 x 600mm)

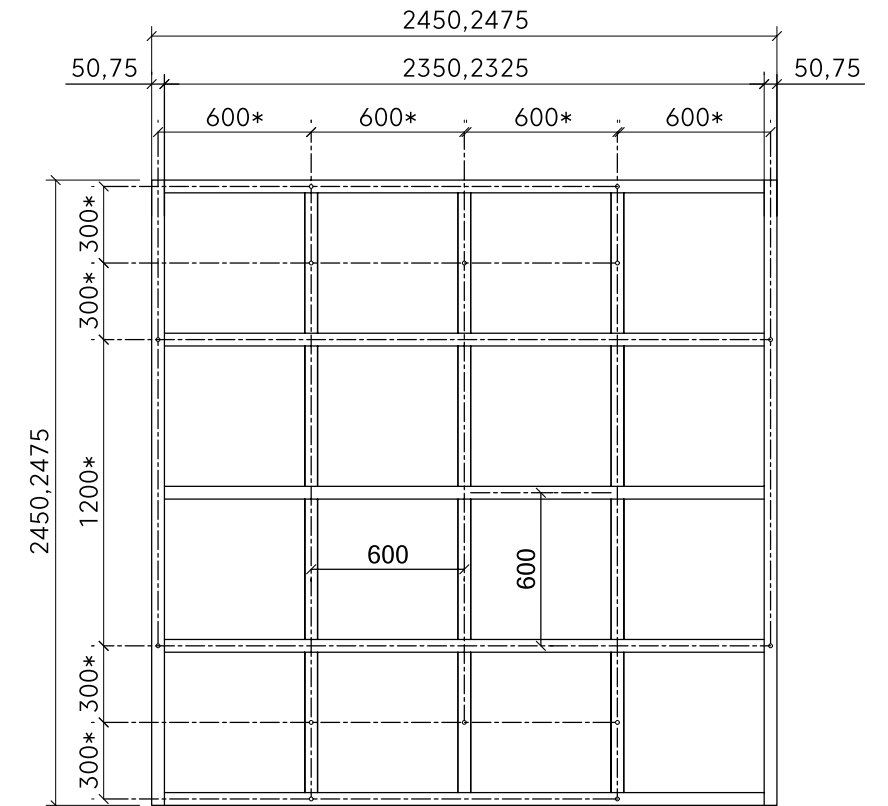
Perspective



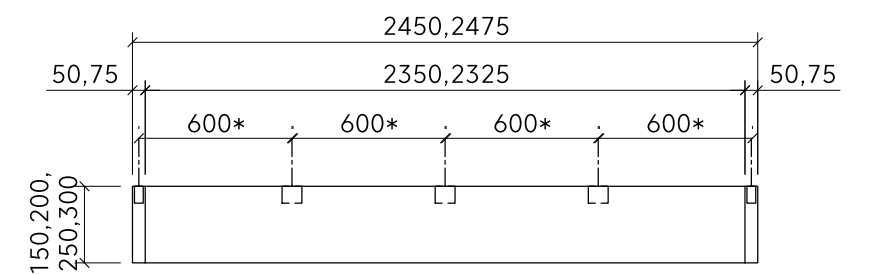
* Ships assembled

Notes
 ‘,’ Indicates sizing option
 * On center attachment spacing

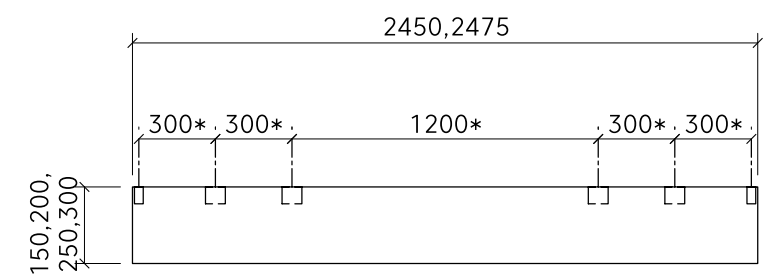
Plan



Front Elevation

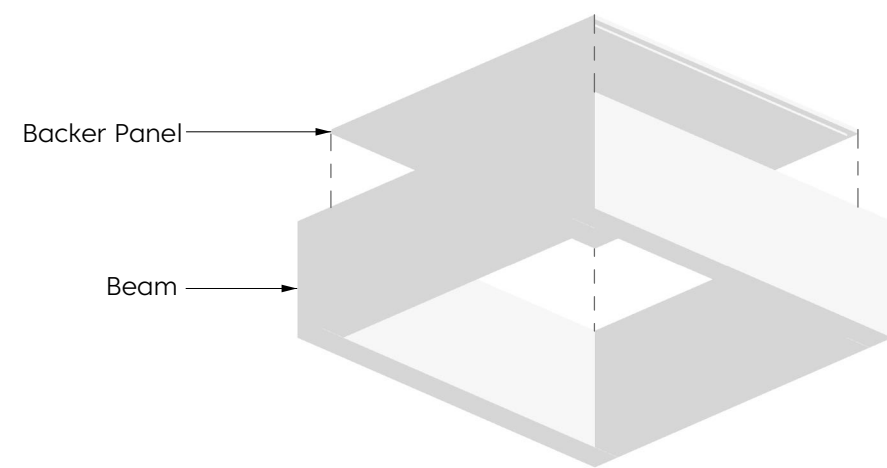
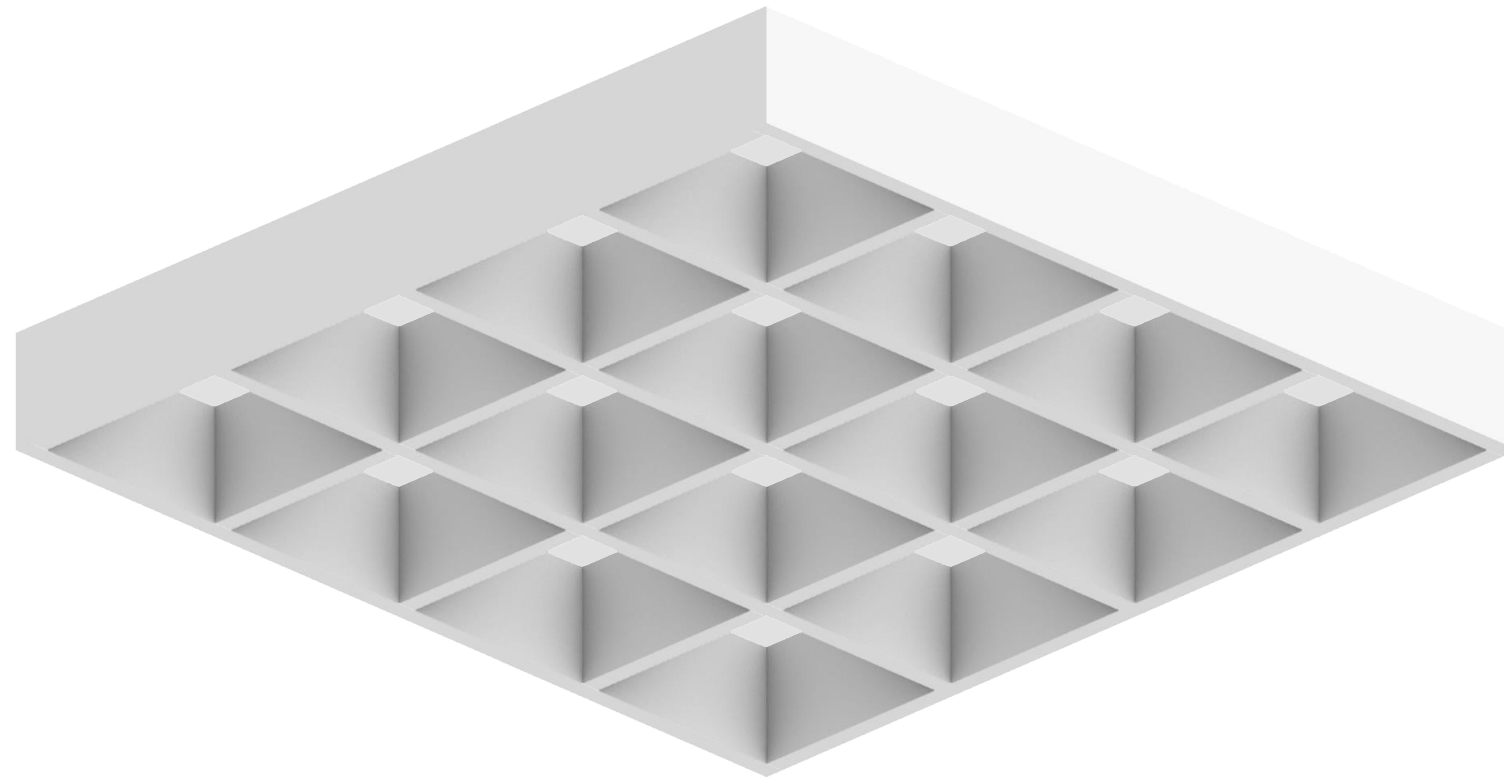


Side Elevation



Capped Design 2 (900 x 900mm)

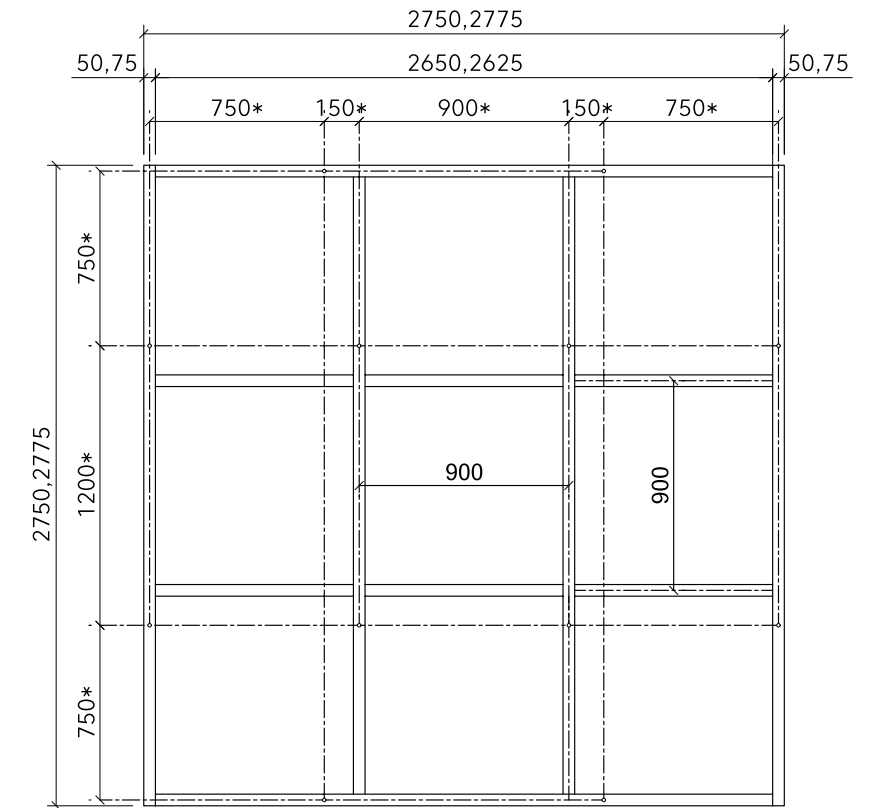
Perspective



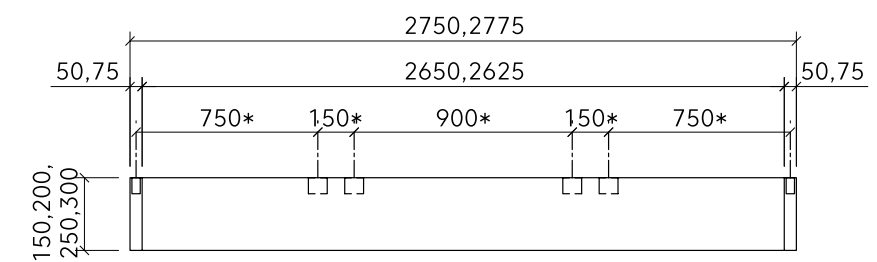
* Ships assembled

Notes
 ‘,’ Indicates sizing option
 * On center attachment spacing

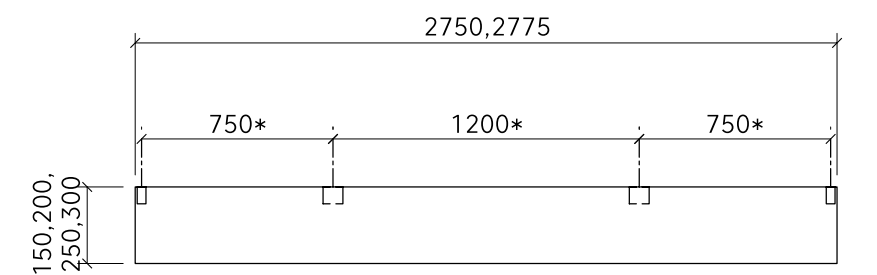
Plan



Front Elevation

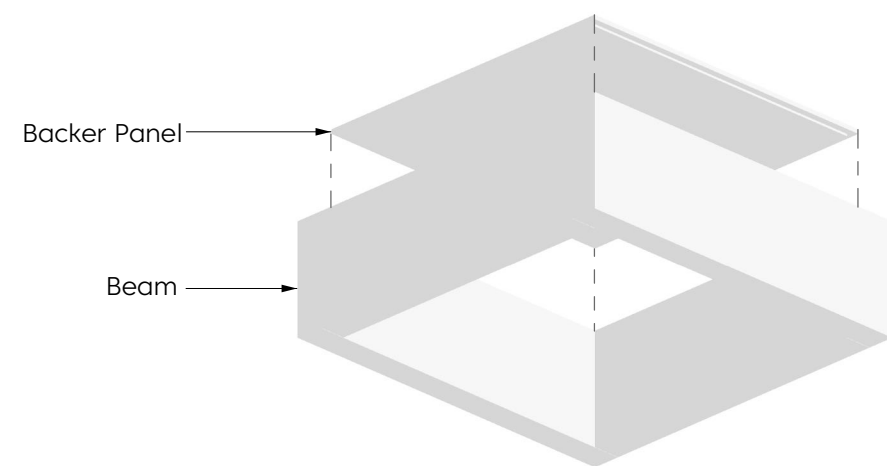
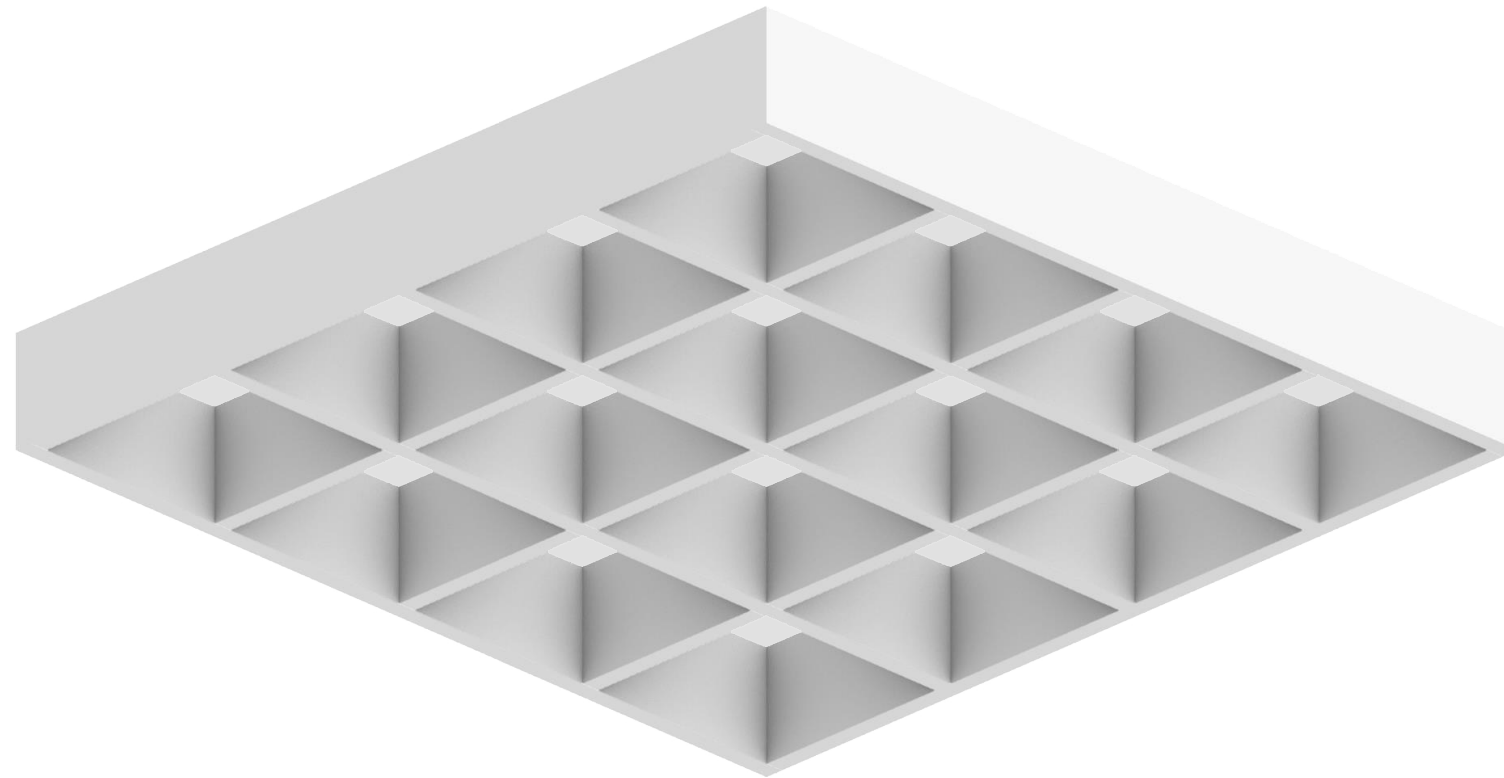


Side Elevation



Capped Design 3 (1200 x 1200mm)

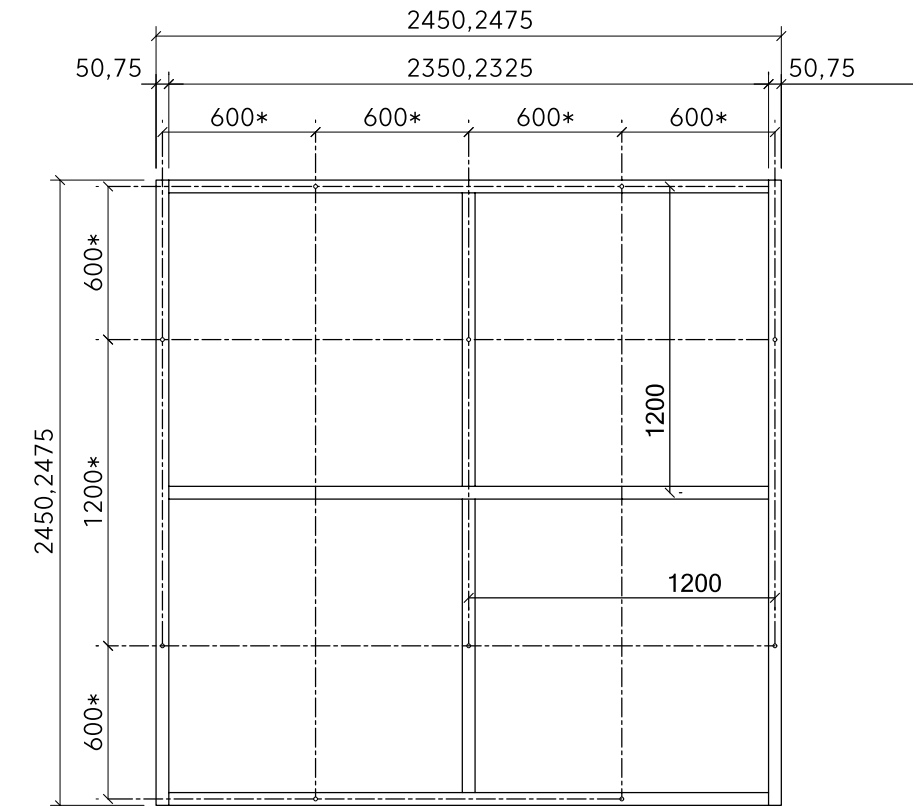
Perspective



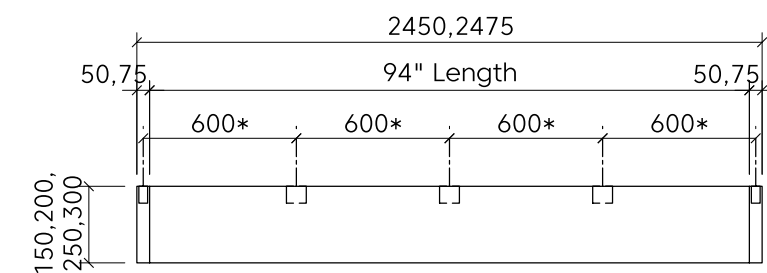
* Ships assembled

- Notes**
- ';' Indicates sizing option
 - * On center attachment spacing

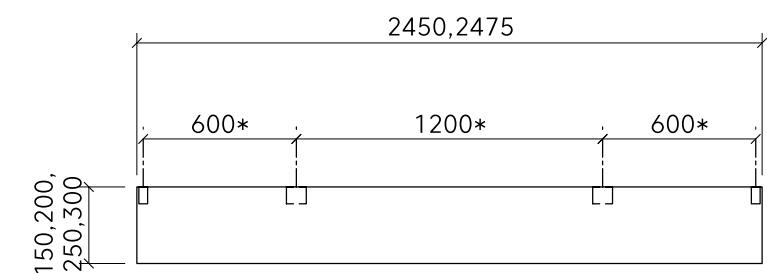
Plan



Front Elevation

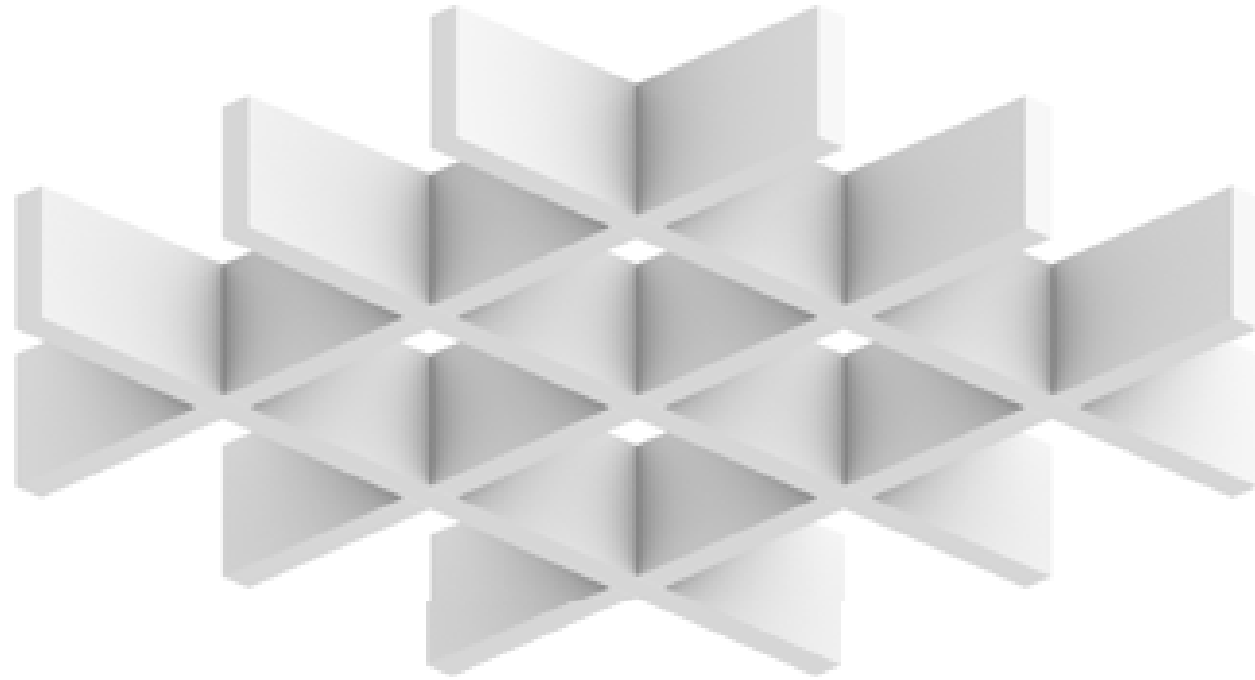


Side Elevation

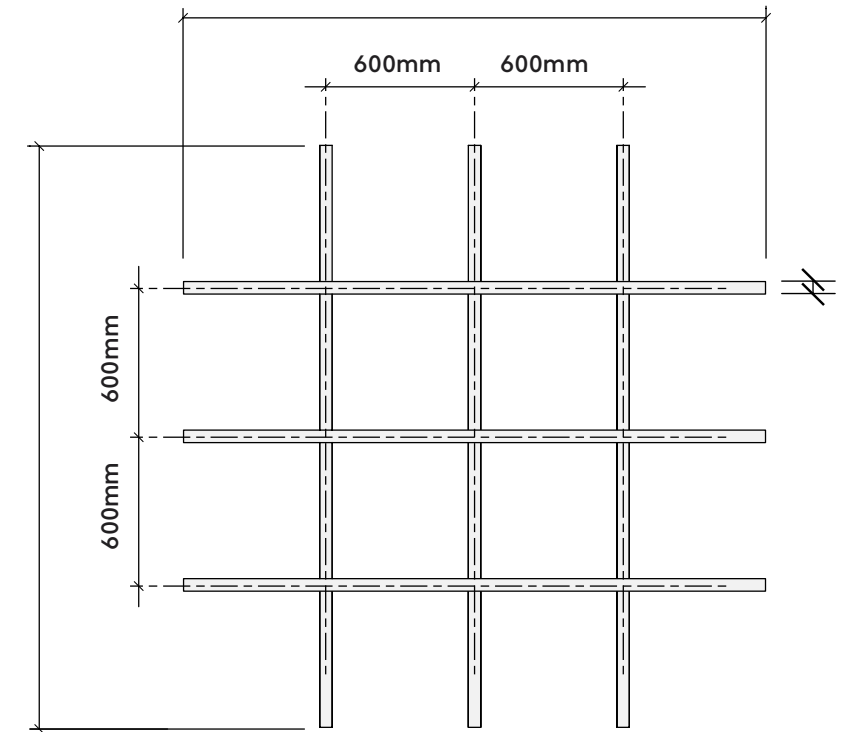


Frameless Design 1 (600 x 600mm)

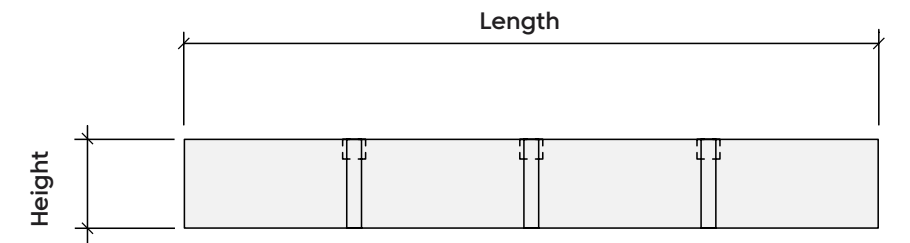
Perspective



Plan



Elevation



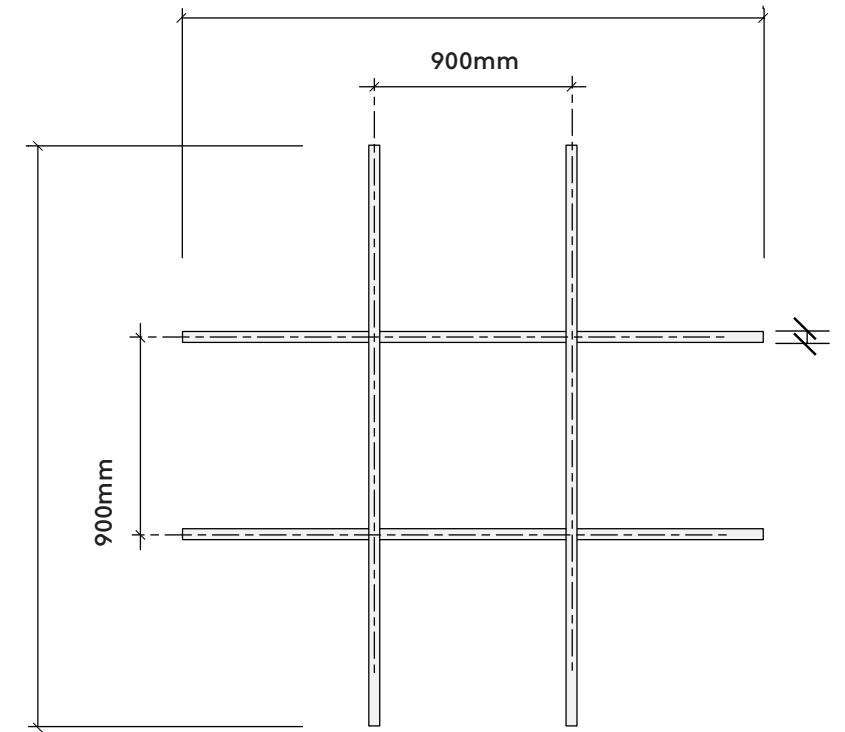
Notes
' indicates sizing option
* on centre attachment spacing

Frameless Design 2 (900 x 900mm)

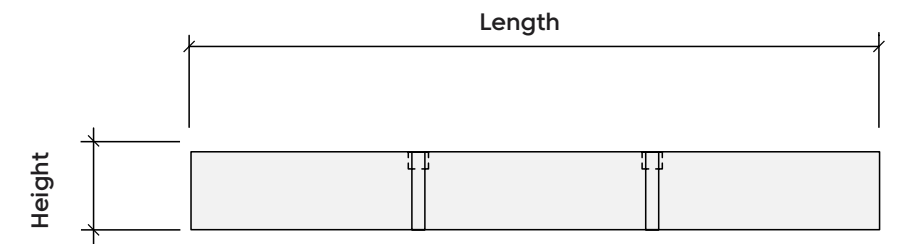
Perspective



Plan



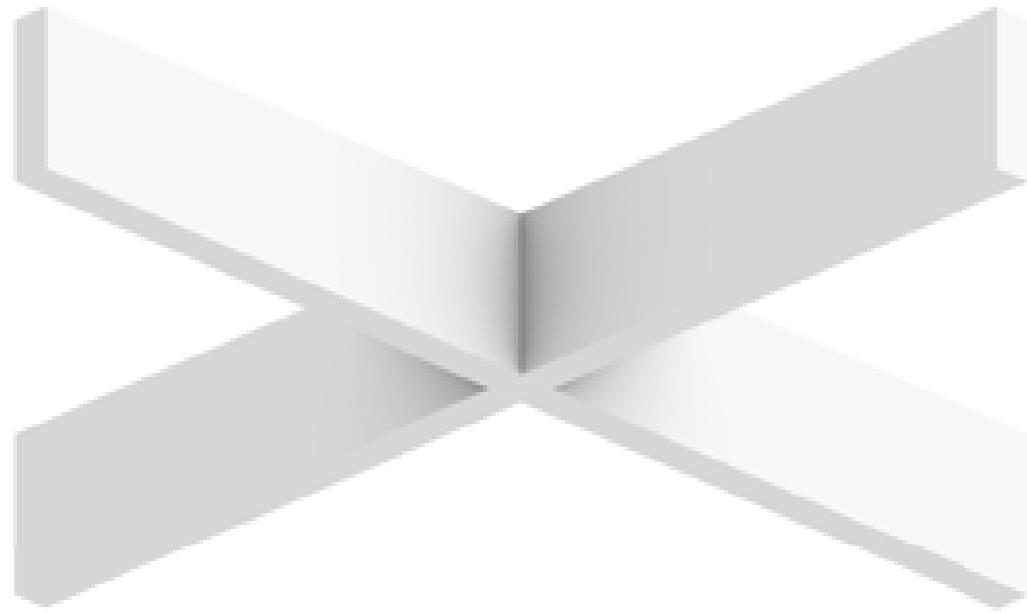
Elevation



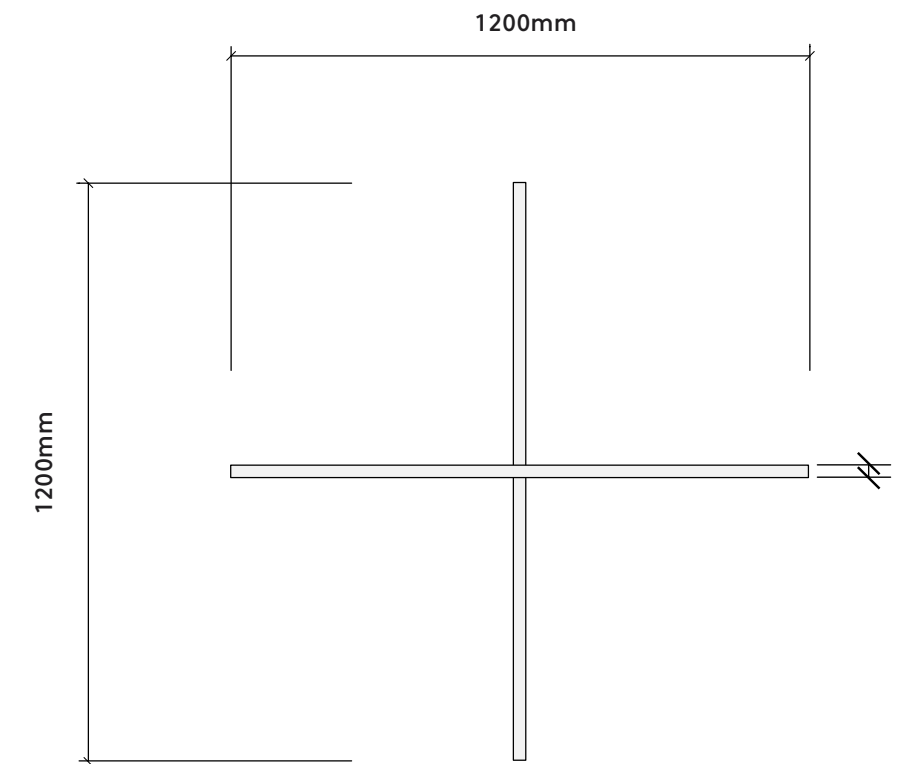
Notes
';' indicates sizing option
* on centre attachment spacing

Frameless Design 3 (1200 x 1200mm)

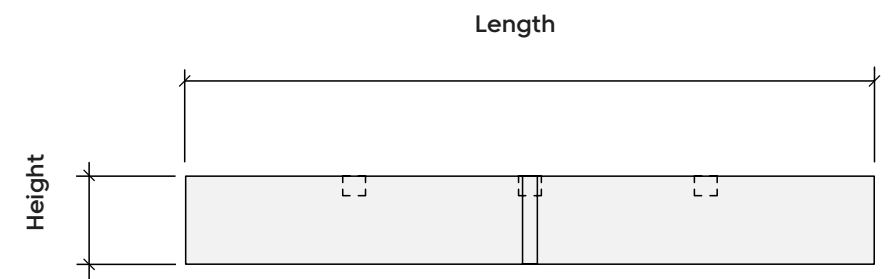
Perspective



Plan



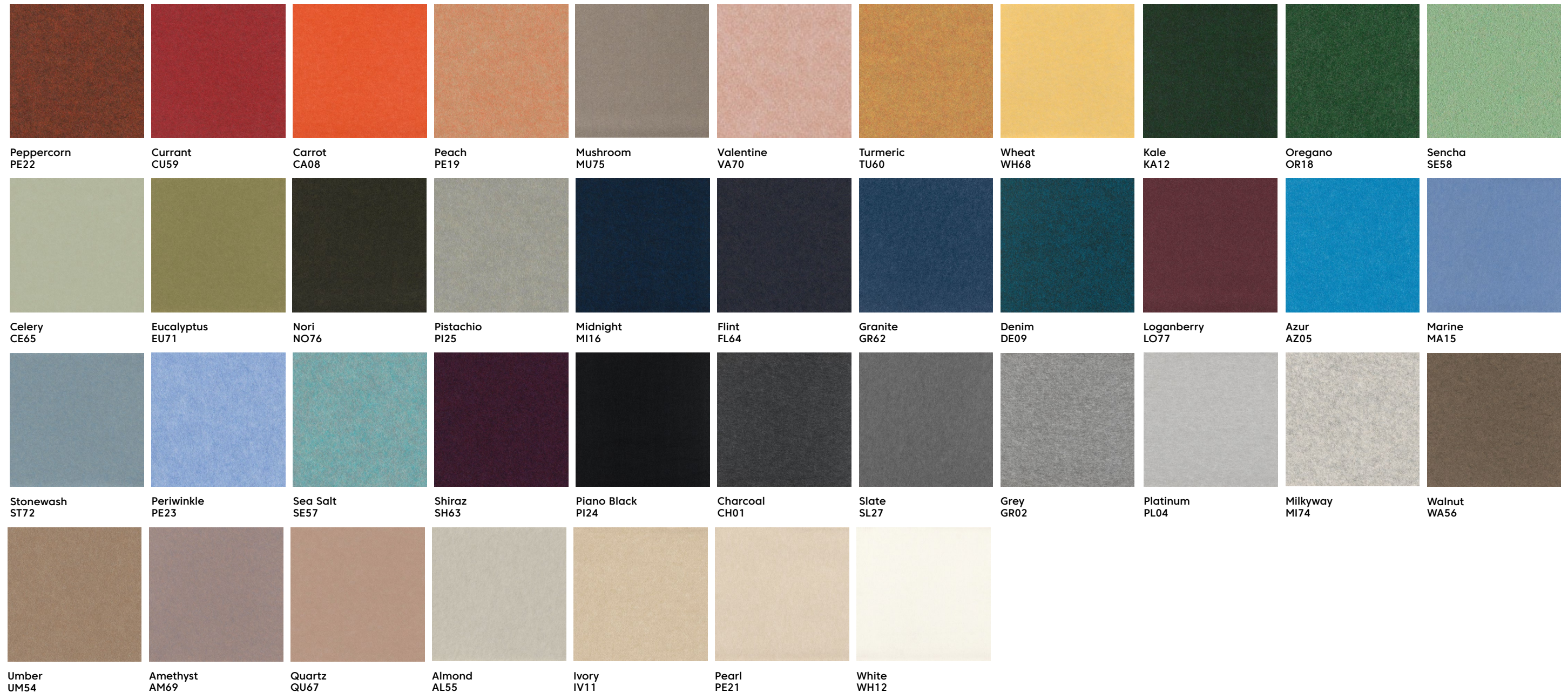
Elevation



Notes

- ' indicates sizing option
- * on centre attachment spacing

Premier Colourways



Can't find a colour?

We are constantly updating our palette, which includes adding and discontinuing certain colour lines. If you can't find the colour you are looking for, please contact us with your colour request, as we may still have stock available.

WoodGrain Prints



Picket Fence
WQ01



Boat Shed
WQ02



Wine Barrel
WQ03



Log Cabin
WQ04



Barn Door
WQ05



Loft
WQ06



White Elm
WQ07



French Bobbin
WQ08



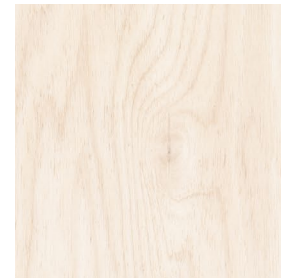
Charred Larch
WQ09



Boardwalk
WQ10



Antique Chest
WQ11



Baltic Birch
WQ12



White Oak
WQ13



Weathered Slate
WQ14



Nordic Plank
WQ15



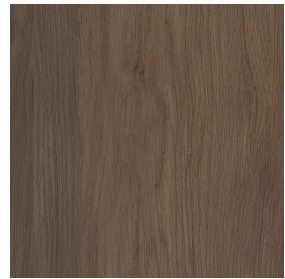
Natural Oak
WQ16



European Larch
WQ17



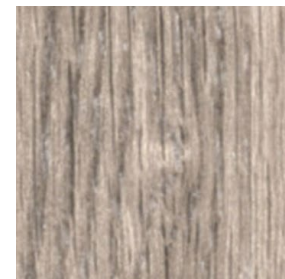
Teak
WQ18



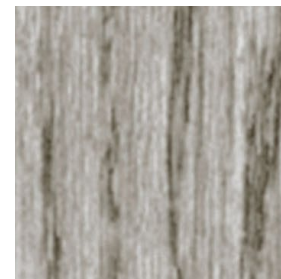
Fumed Oak
WQ19



Black Walnut
WQ20



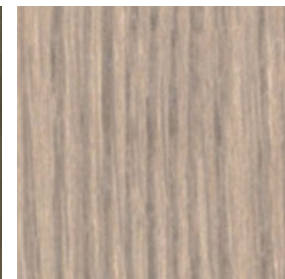
Driftwood
WQ21



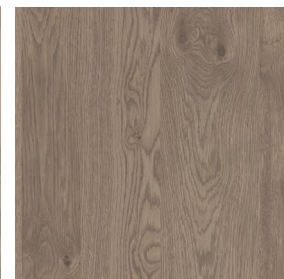
Woodland Fog
WQ22



Petrified Ash
WQ23



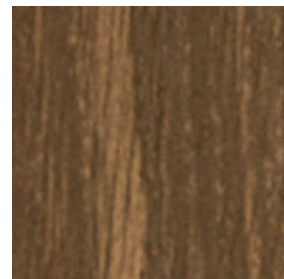
Mountain Lodge
WQ24



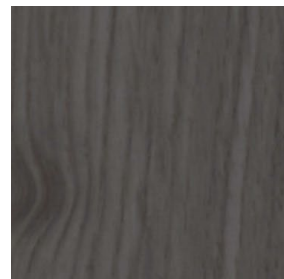
Mocha Legno
WQ25



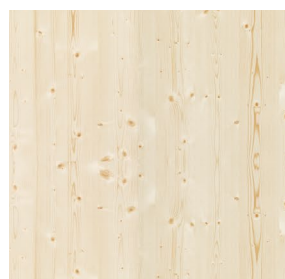
Scorched Timber
WQ26



Espresso Oak
WQ27



Shadow Oak
WQ28



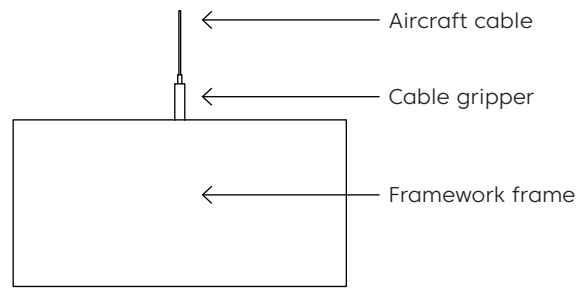
Knotty Spruce
WQ29



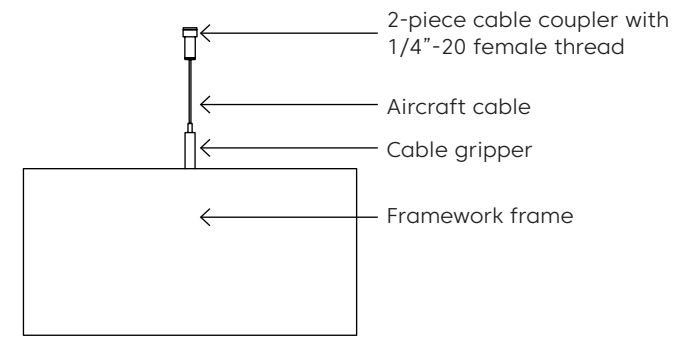
Lyed Larch
WQ30

Mounting Methods

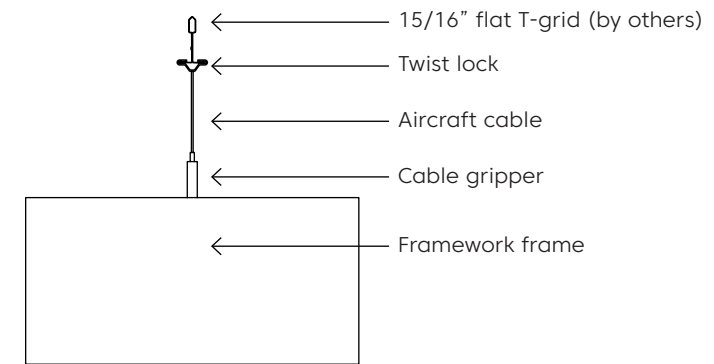
Cable



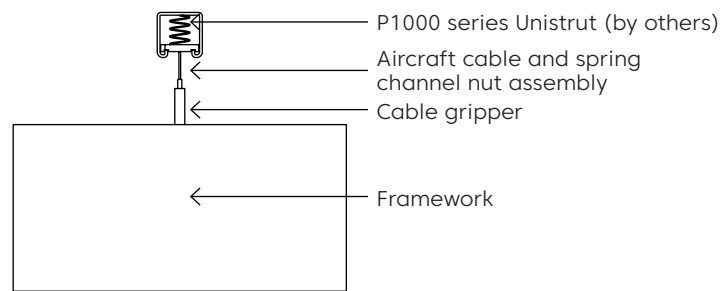
Cable to deck



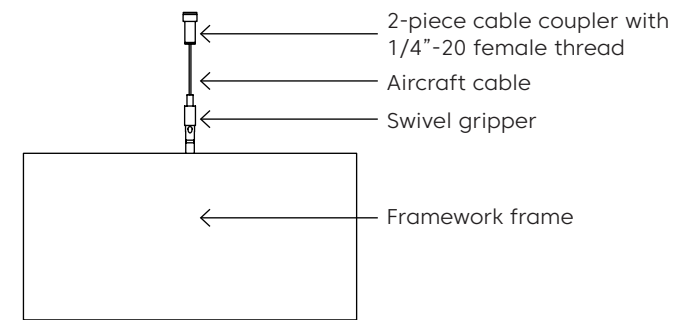
Cable to T-grid



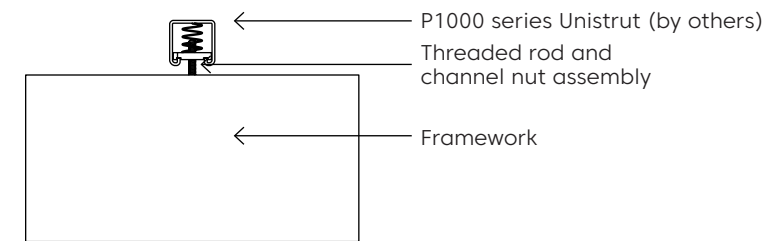
Cable to Unistrut



Swivel cable to deck



Direct to Unistrut



Twist lock to T-grid

