

acoufelt
making quiet









Regular Ceiling Baffles

Product Detail

Application	Ceiling
Composition	100% polyester
Material	FilaSorb™
Recycled content	60% min
Weight	2400gsm
Thickness	12mm +/- 10% 24mm +/- 10%
Dimensions	12 x 200 x 2800mm 24 x 200 x 2800mm 12 x 200 x 1400mm 24 x 200 x 1400mm Custom sizes upon request

Sustainability

 Made from 60% min. recycled content	 Recyclable at end of lifespan
 Generated using 40% solar energy	 Declare Red List Free (3 rd Party Verified) <i>*12mm products only</i>
 Total VOC's less than 0.5 mg/m ³ (3 rd Party Verified)	 Indoor Advantage Gold Certified. <i>*12mm products only</i>



Technical Data

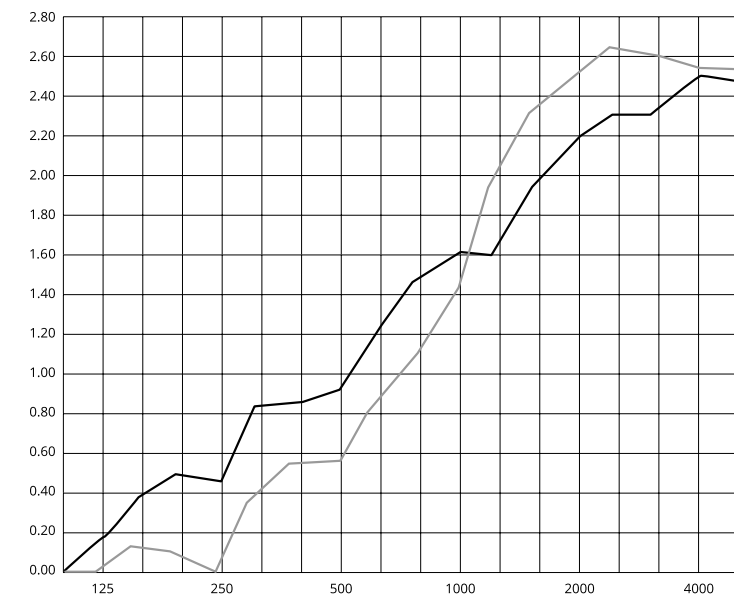
Fire test method	EN 13501-1: 2019
Classification	B-s1, d0
Water vapour sorption method	ASTM C1104-2019 (Procedure A Modified)
Water sorbed by weight	0.20% (results based on a 12mm thick panel)
Total VOC test method	SCS-EC10.3-2014 v4.0 meeting standard CDPH/EHLB Standard Method v.1.2-2017
Total VOC result	≤ 0.5mg/m ³
Colourfastness test method	ISO 105-B02
Rating	6-7

Guarantees

Lead time	4-6 weeks
Origin	United Kingdom
Warranty against defects	20 years*
Colourfastness warranty	20 years* <small>*conditions apply</small>

Acoustic Performance

Test method	AS ISO 354-2006: Acoustic - Measurement of sound absorption in a reverberation room	
Installation method	<u>12mm</u> J-600. Sample tested 6 baffles each 2.8m x 0.3m x 12mm, sample hanging 600mm from floor and 152mm apart.	<u>24mm</u> J-600. Sample tested 6 baffles each 2.8m x 0.3m x 24mm, sample hanging 600mm from floor and 152mm apart.
Rating method	ISO 11654-1997: Acoustic – sound absorbers for use in buildings – rating of sound absorption	
Test results	<u>12mm</u> NRC 1.30 aw <1.0 (MH) Class C	<u>24mm</u> NRC 1.15, 600mm air gap aw <1.0 (MH), Class E



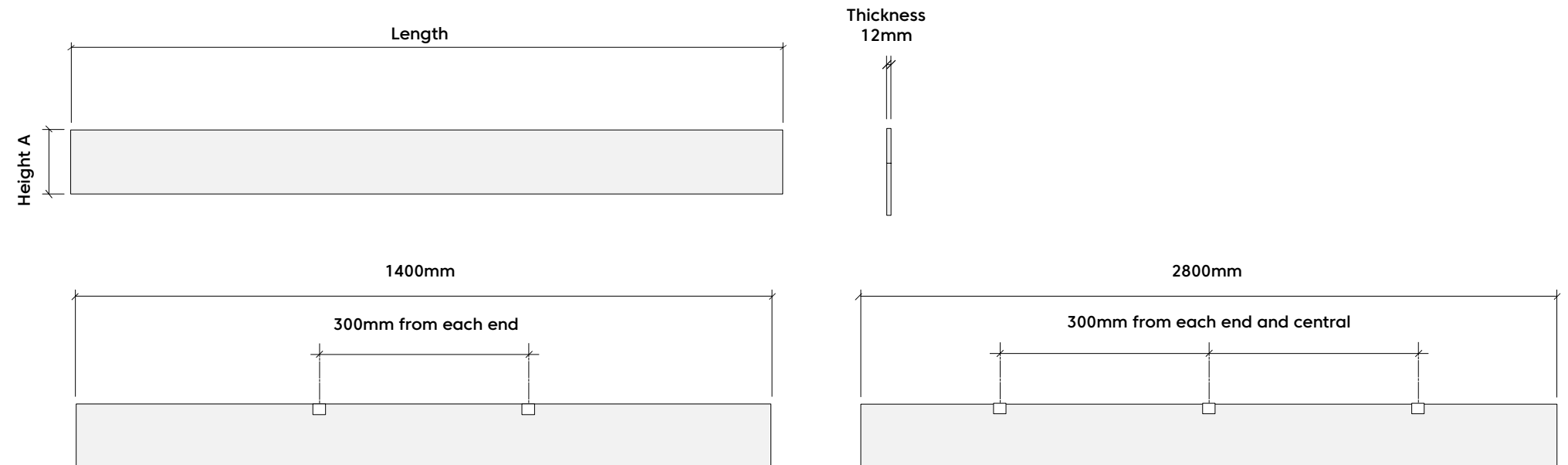
Frequency (Hz)	125	250	500	1000	2000	4000	NRC	Class Rating
12mm	0.17	0.44	0.93	1.62	2.20	2.51	1.30	Class C
24mm	0.01	0.00	0.56	1.45	2.52	2.55	1.15	Class E

Performance Indices: **Noise Reduction Coefficient (NRC)** results represent the absorption coefficients measured at the one third octaves bands at 125, 250, 500, 1000, 2000 and 4000 Hz rounded to the nearest 0.05. Acoustic testing has been performed according to the methods mentioned above. Customization of installation of the product could alter the results.

Linear Design

Sizes

Standard Height	200mm
Standard Lengths	1400 & 2800mm <i>Custom sizes available</i>
Thickness	12 & 24mm

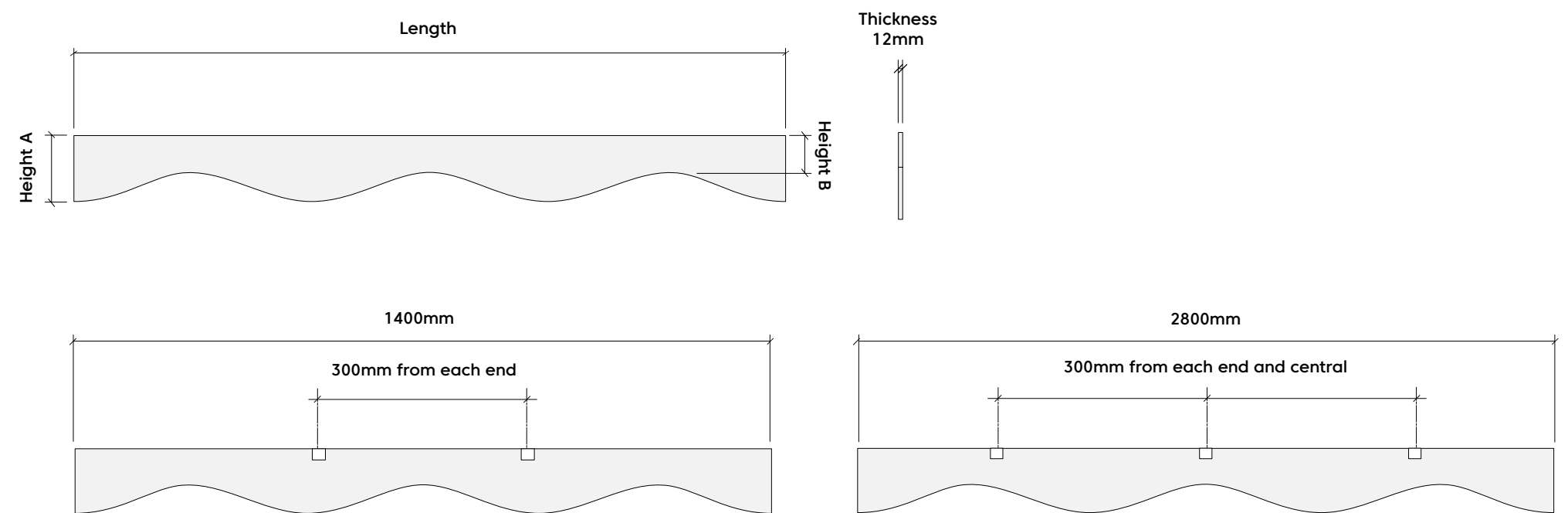


Hardware Spacing

Ripple Design

Sizes

Standard Height	200mm
Standard Lengths	1400 & 2800mm <i>Custom sizes available</i>
Thickness	12 & 24mm

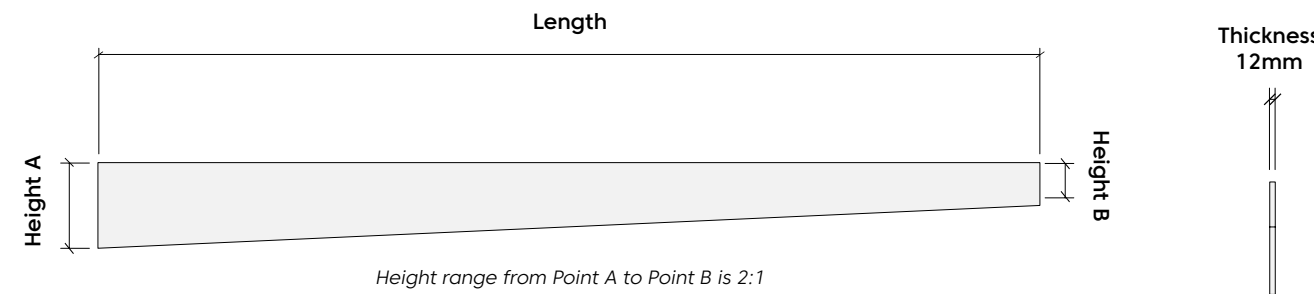


Hardware Spacing

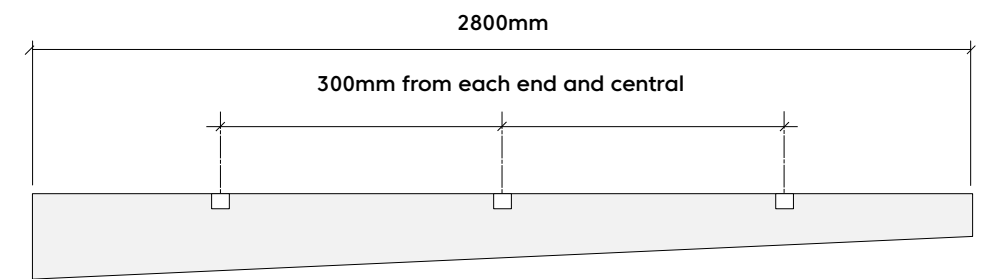
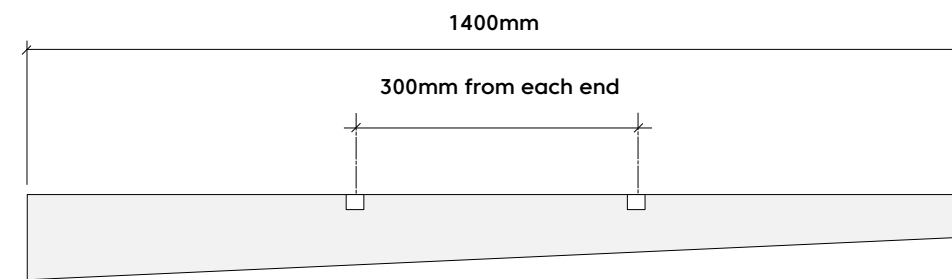
Wing Design

Sizes

Standard Height	200mm
Standard Lengths	1400 & 2800mm <i>Custom sizes available</i>
Thickness	12 & 24mm



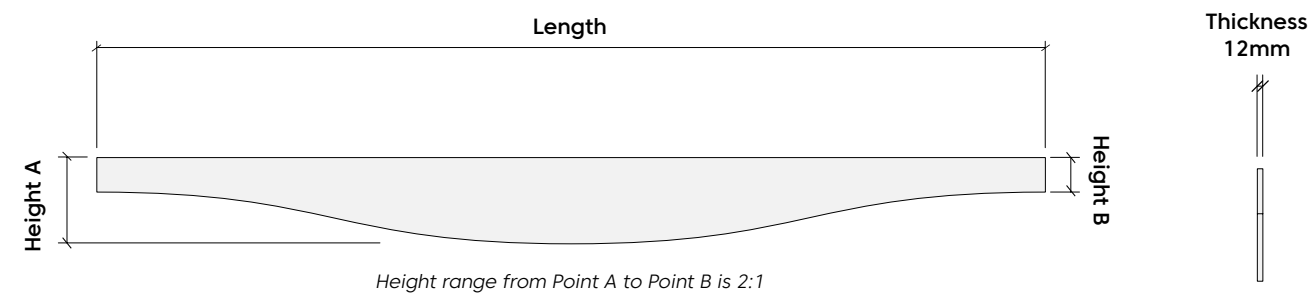
Hardware Spacing



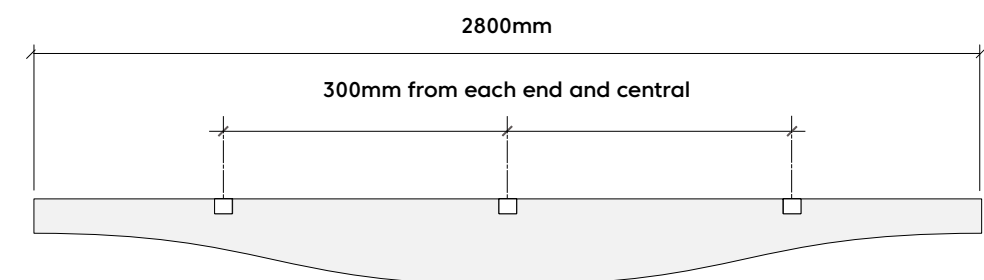
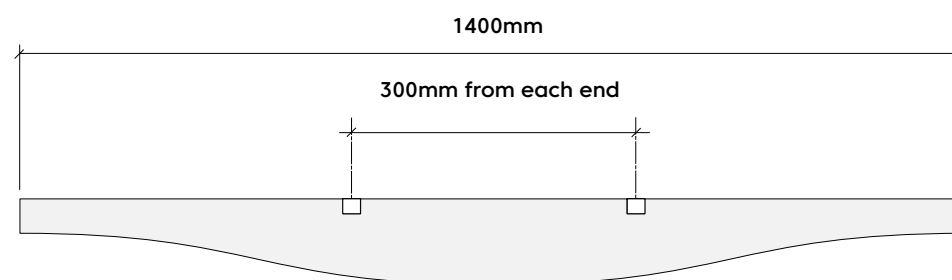
Curve Design

Sizes

Standard Height	200mm
Standard Lengths	1400 & 2800mm <i>Custom sizes available</i>
Thickness	12 & 24mm



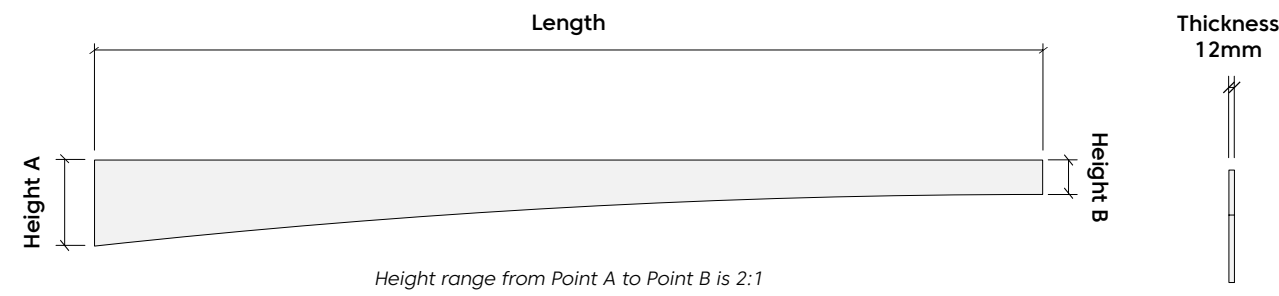
Hardware Spacing



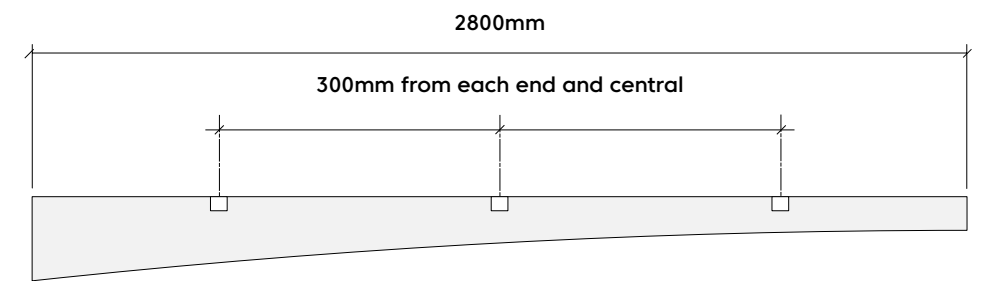
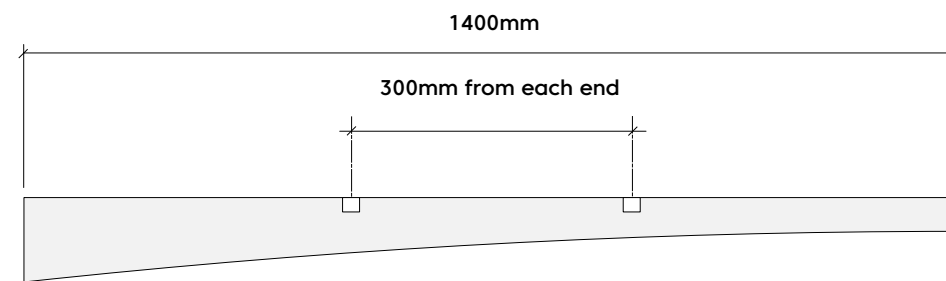
Arc Design

Sizes

Standard Height	200mm
Standard Lengths	1400 & 2800mm <i>Custom sizes available</i>
Thickness	12 & 24mm



Hardware Spacing



Premier Colourways

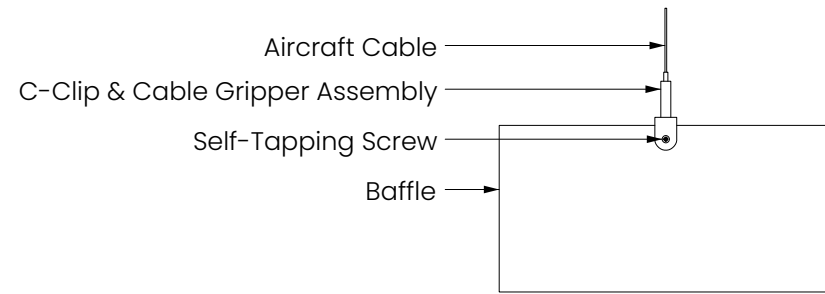


Can't find a colour?

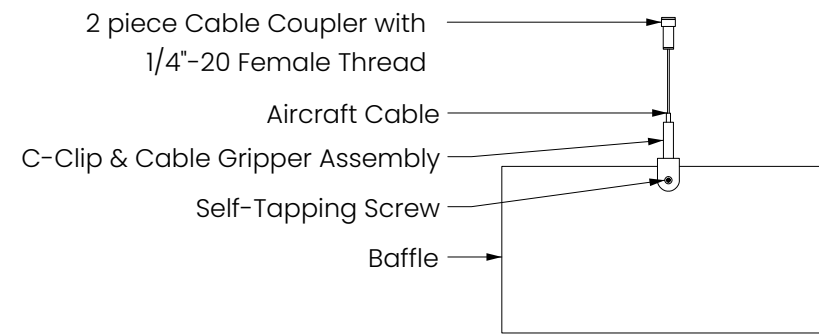
We are constantly updating our palette, which includes adding and discontinuing certain colour lines. If you can't find the colour you are looking for, please contact us with your colour request, as we may still have stock available.

Mounting Methods

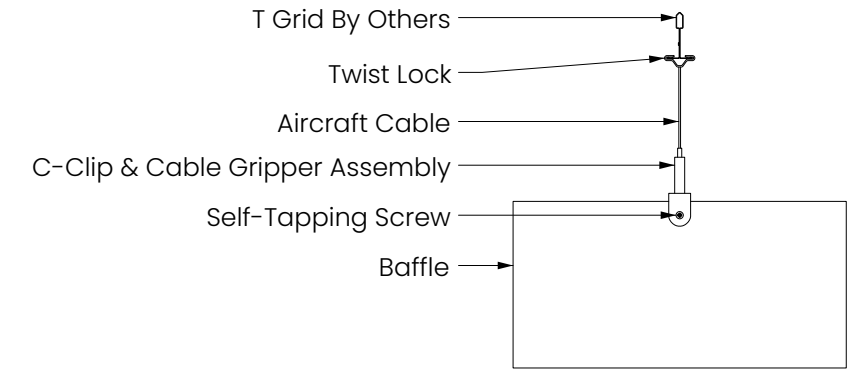
Cable



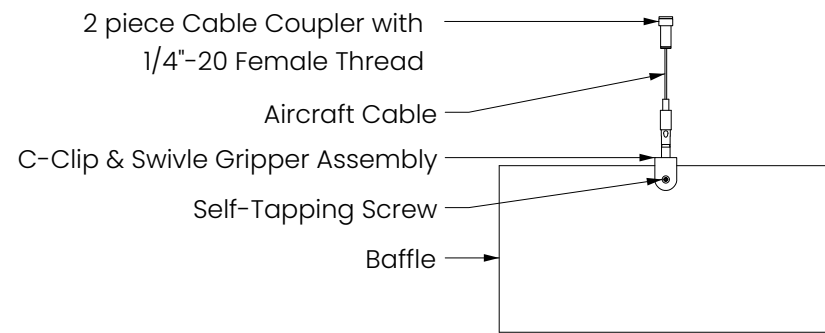
Cable To Deck



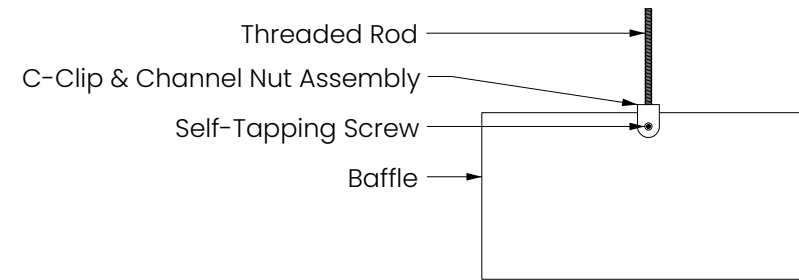
Cable To T Grid



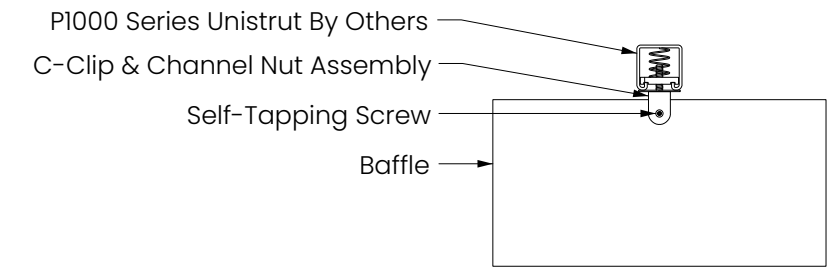
Swivel Cable To Deck



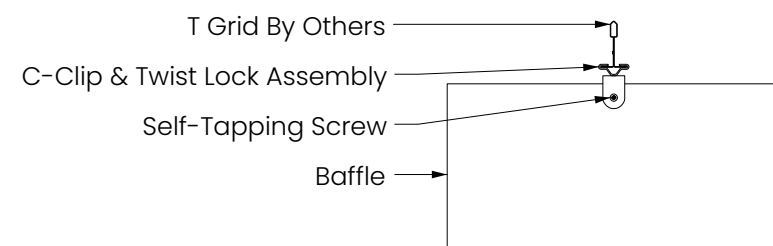
Threaded Rod



Threaded Rod to Unistrut



Twist Lock To T Grid



Magnet to T Grid

